



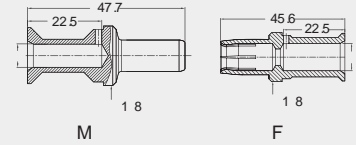
冷压针 Crimp contacts

 200A 冷压接插针(适用于HM插芯)
 200A Crimp contacts (for HM inserts)

接触电阻 0.3m Contact resistance 0.3m

 镀银
 silver plated


公 Male	订货号 PartNumber	母 Female	订货号 PartNumber
CHSM200-25	09110006120	CHSF20	09150006220
CHSM200-35	09110006121	CHSF20	09150006221
CHSM200-50	09110006122	CHSF20	09150006222
CHSM200-70	09110006123	CHSF20	09150006223

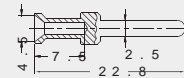


导线截面 Wire gauge		剥线长度 Stripping length
2.5 mm	7	22.5 mm
3.5 mm	8.2	22.5 mm
5.0 mm	1.0	22.5 mm
7.0 mm	11.5	22.5 mm
电缆绞线依据 IEC 60 228-5		

 保险延迟针
 Relay contact

 镀银
 silver plated


线规 (mm ²) Wire gauge (mm ²)	型号 Designation	订货号 PartNumber
1.0	CESM-1.0R	09330006109
1.5	CESM-1.5R	09330006110
2.5	CESM-2.5R	09330006111

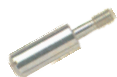




编码 Coding

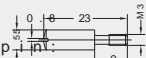
用编码销编号 Coding system with code pins

编码销
Code pin

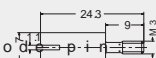


型号 Designation 订货号 PartNumber
CODE-M3 09300009901

编码销 :
Code pin



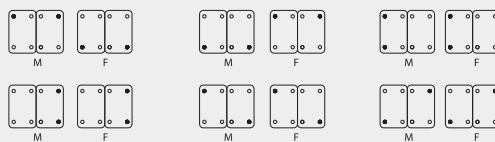
模块型编码销 :
Modular code pin



适用于可安装一个插芯或框架的外壳
for hoods housings with one insert one frame



适用于可安装两个插芯或框架的外壳
for hoods housings with two inserts two frames



编码销 M - 公插芯
Code pin M - Male insert
正常螺丝 F - 母插芯
Normal mounting screw F - Female insert

模块型编码销
Modular code pin



MCODE-M3 09140009901

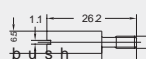
用导向销和导向孔编号 Coding system with guide pins bushes

导向孔
Guide bush

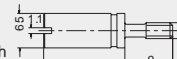


型号 Designation 订货号 PartNumber
GBUSH-M3 09330009909

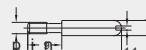
导向孔
Guide bush



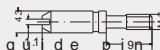
模块型导向孔
Modular guide bush



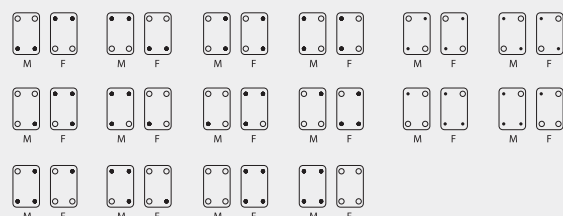
导向销
Guide pin



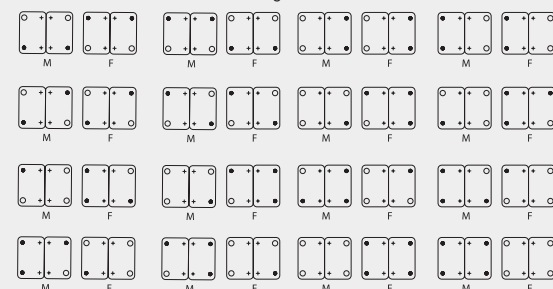
模块型导向销
Modular guide pin



适用于可安装一个插芯或框架的外壳
for hoods housings with one insert one frame



适用于可安装两个插芯或框架的外壳
for hoods housings with two inserts two frames



导向孔 M - 公插芯
Guide pin M - Male insert
导向销 F - 母插芯
Bush F - Female insert
+ 正常螺丝
Normal mounting screw

导向销
Guide pin



GPN-M3 09330009908

模块型导向孔
Modular guide bush



MGBUSH-M3 09140009909

模块型导向销
Modular guide pin



MGPN-M3 09140009908

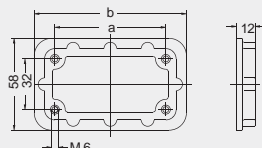


固定框架 frame

安装架 Mounting

用于H version
for H version housings

规格 Size	型号 Designation	订货号 PartNumber
6B	HP6B-MF	09400009921
10B	HP10B-MF	09400009922
16B	HP16B-MF	09400009923
24B	HP24B-MF	09400009924



规格 Size	a	b
6B	70	96
10B	83	109
16B	103	129
24B	130	156

对接架 Docking frame

规格 Size	型号 Designation	订货号 PartNumber
6B	H6B-ADK	09300061701
10B	H10B-ADK	09300101701
16B	H16B-ADK	09300161701
24B	H24B-ADK	09300241701



安装开口 Assembly cut out

技术参数 Technical characteristics

材料 Material

- 对接架 不锈钢
- Docking frame stainless steel
- 固定螺栓 铁, 镀锌
- Fixing screws, zinc-plated

插入容差 Pull-in-range

- x轴 x-axis $\pm 5mm$
- y轴 y-axis $\pm 5mm$

拔插次数 500

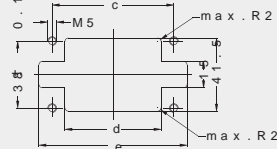
Mechanical working life

1) 距离 电气针和光线电缆距离最大 7 mm
气动针距离最大 26 mm
Distance for electrical and F.O. contacts max. 7 mm; for pneumatic contacts max. 26 mm

产品包括 Range of delivery:

- 1个架子 1 frame
- 4个带平头的螺栓, 用于固定对接架
- 4 cheese head shoulder screws to fix the docking frame

规格 Size	a	b	c	d	e
6B	86	69	69	54.5	84
10B	99	82	82	67.5	97
16B	119.5	102.5	102.5	88	117.5
24B	146	129	129	114.5	144





工具 Tools

退针器 Contact removal tools

D - sud 退针器- sub Contact removal tool



适用范围 Application	型号 Designation	订货号 PartNumber
5A冷压针	TL08	09990000368
for 5A crimp contact		

HD 退针器 HD Contact removal tool



适用范围 Application	型号 Designation	订货号 PartNumber
10A冷压针	TL00	09990000012
for 10A crimp contact		
16A带三爪的公插针		
16A male contact		
(take three claws support)		

HEE 退针器 HEE Contact removal tool



适用范围 Application	型号 Designation	订货号 PartNumber
16A冷压针	TL01	09990000319
16A crimp contact		

HEE 退针器 HEE Contact removal tool



适用范围 Application	型号 Designation	订货号 PartNumber
16A带三爪的母插针	TL09	09990000328
16A female contact		
(take three claws support)		

C型 退针器 Contact removal tool



适用范围 Application	型号 Designation	订货号 PartNumber
40A冷压针	TL06G	09990000305
40A crimp contact		

K型 退针器 Contact removal tool



适用范围 Application	型号 Designation	订货号 PartNumber
H2MK-002 插芯	TL07	09990000383
H2MK-002 inserts		
MGK-001 插芯		
HMK-001 inserts		



工具 Tools

压接工具 Crimping tools

5A 冷压钳 Crimping tool



压接线径 Wire gauge	型号 Designation	订货号 PartNumber
0.09-0.82mm ²	TL03	09990000001

10A / 16A / 40A 冷压钳 10A / 16A / 40A Crimping tool



压接线径 Wire gauge	型号 Designation	订货号 PartNumber
0.14 - 2.4 mm	TL02G	09990000021
1.5 - 6 mm	TL02-0G	09990000110
4 / 6 / 10 mm	TL02-3G	09990000303

100A / 650A 大电流手动液压钳 100A / 650A manual hydraulic clamp



描述 Description	压接线径 Wire gauge	型号 Designation	订货号 PartNumber
出力：自动泄压 Output: automatic pressure release	10-240mm ²	TL05	09990000385
出力：13T Output: 13T			
重量：6.2kg Weight: 6.2kg			